



Virtual Colonoscopy analyze.visualize.better

Virtual Colonoscopies just got faster, easier, better.

Faster and more accurate diagnoses through extensive, easy-to-use & cutting-edge tools for CT Colonography.

3Dnet Suite™

CTC Practitioners: see things from a new perspective.

Faster. 3Dnet™ Suite Colon's unique core design optimizes memory and computer resource utilization allowing for quick rendering of image volumes.

Easier. 3Dnet™ Suite Colon is designed to adapt to doctors' needs according to user profiles. As a result, the easy-to-use interface can be as feature-rich or as simple as you like.

Better. Improve relations with patients with faster turn-around times. Complete more evaluations in less time so you can go home at a reasonable hour. Meet hospital objectives of reducing patient waiting lists while still reducing costs.

3Dnet™ Suite Colon can be integrated seamlessly into the RIS/PACS environment.

Biotronics 3D™
Medicine in Three Dimensions





PACS

3Dnet Suite™

sync/offline

3Dnet™ Suite installed on laptop. Downloads data before leaving hospital, works offline at home and then saves data back to PACS after returning to hospital.

thin-client

3Dnet™ Suite accessed remotely on hospital server with laptop and high-speed internet connection.

distributed

3Dnet™ Suite installed on a home PC; uses high-speed internet to download/upload data.

Recommended Specifications:

Hardware Specifications:

Windows Vista/XP/2000/NT PC, 2GB RAM. Dual-core processing (at least 3.0GHz)

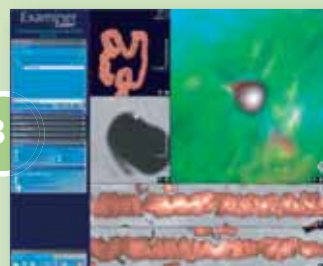
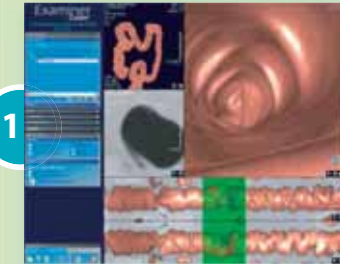
Available integrated into many PACS multi-modality workstations.

Input Data

- DICOM CT Colonography (CTC) volume datasets
- More than 3000 512x512 matrix images loadable with 4GB RAM & 64-bit OS.
- At least 1500 512x512 matrix images loadable with 2GB RAM.

Polyp? Or False +?

3Dnet™ Suite Colon includes a **Show Translucency** function that, when utilised, helps to eliminate false positives for polyps that sometimes occur when barium-enhanced fecal matter is present.



- 1) An area of interest is identified.
- 2) Single-click zoom feature enlarges the area.
- 3) Endo Translucency applied. White color indicates likely barium/fecal matter, not a polyp.

Features

Input Volume - CT Colonoscopy.

Interactive Multi-Planar and double oblique Reconstruction (MPR)

Automatic Segmentation and Centerline Extraction

Electronic Bowel Cleansing - reduces residual foreign matter for more accurate exams.

Show Translucency - quickly identify barium/fecal matter to eliminate false positives for polyps.

Fly-Throughs - perform automatic and interactive fly-throughs and then zoom in on abnormalities with a single click.

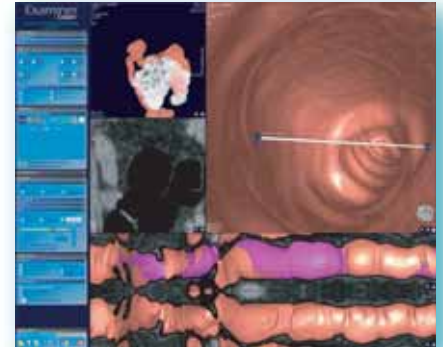
View Layout / Multiple Views - supports 2D, 3D, fly-through (FT), four, nine, sixteen and twenty-five views.

Measurement & Annotation - save lengths, diameters, angles, add text comments and insert arrows.

Volumetric Tool - semi-automated tool to perform volumetric and area measurements on arbitrary 3D structures.

Comparison mode: Support for two datasets - display two datasets on the same screen (or on different screens). The datasets can be the same volume displayed at different settings or the volumes can be linked for comparison mode.

Reporting - pre-defined reports reduce the time to complete an exam and increase departmental through-put.



FT Layout with visited regions highlighted in purple.

Cine Mode - choose between following the centerline, view-aligned (straight line forward or backward) or various rotations. Record video clips to include in reports or export for use in presentations.

Live Update of Visited Regions - when in the FT layout, instantly see which regions you have viewed.

Monitor Calibration - ability to calibrate the monitor in use.

Knowledge Base - view textbook-style 3D illustrations as well as link to external websites.

Flexible Licensing Scheme - 3Dnet™ Suite enables you to combine standard workstation licenses, concurrent licenses and pay-as-you-go 'tokens' to achieve the best fit for your organization.

Fully integrated with your RIS/PACS - 3Dnet™ Suite can be easily integrated into the RIS/PACS environment.

This is a controlled document. Version 004 17 Nov 2008.